

ROLLline R5 SONAR

- Internal electronic measuring arm for rim distance & diameter.
- Automatic selecting program of balancing
- External SONAR measure wheel width.
- Threaded screw 40 mm
- Pedal brake
- Ergonomically designed, allows the best access within the rim
- Wheel cover occupies little space
- Fast measurement cycle in 4 second to save working time
- Split weight mode to place weights, hidden and unseen behind spokes
- Self-calibration and self-diagnosis



Made in Italy

PRODUCT NUMBER / DESCRIPTION

8007	ROLL R5 SONAR Power supply: single-phase 220v - 50/60Hz
-------------	--

DATASHEET

- Accuracy 0,5 gr
- Tire width min 1,5" - max 20"
- Rim diameter min 10" - max 30"
Maximum tire diameter 1200 mm
- Rotation speed 100 rpm
- Max wheel weight 75 kg
- Weight 140 kg
- Dimensions (H x D x L) 1400 x 1200 x 1300 mm

STANDARD ACCESSORIES



- Threaded screw with block 40 mm
- Quick nut
- 3 cones from 42 to 110 mm



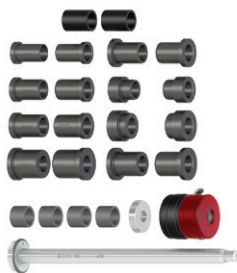
- Weight pliers
- Calibration weight

EXTRA OPTIONS
FOR WHEEL BALANCER ROLL R5 SONAR



ART. 8207

- Motorbike flange kit



ART. 8208

- Motorbike threaded screw kit 19 mm with bushes



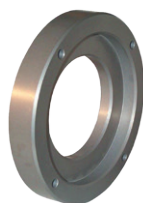
ART. 8213

- 3-4-5 hole flange



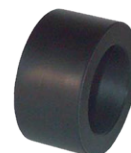
ART. 8204

- Precision bush kit from 52,5 to 122 mm of 9



ART. 8214

- Sport wheels



ART. 8215

- Bush for kit 8214



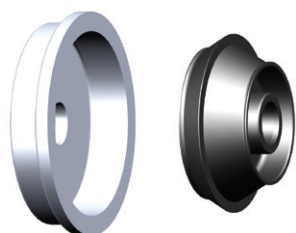
ART. 8216

- Plastic cup with widen diameter for allow wheels



ART. 8217

- Quick nut with lockring and rubber protection



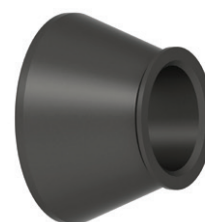
ART. 8201

- Van wheel kit, hole dim. 122-174 mm



ART. 8202

- Slide lift



ART. 8203

- SUV cone 95 - 132 mm