



ROLLline R6 MONITOR

- Internal electronic measuring arm for rim distance & diameter.
- EASYFIT internal electronic measuring arm and a complete software package including all static and dynamic balancing progress.
- External electronic measuring arm for rim width
- Threaded screw 40 mm
- Brake pedal
- Monitor TFT 19"
- Organizer with integrated mouse.
- Automatic identification program of balancing

INSTALLATION VIDEO
INSTRUCTIONS AVAILABLE NOW!



Made in Italy

PRODUCT NUMBER / DESCRIPTION

8010	ROLL R6 MONITOR Power supply: single-phase 220v - 50/60Hz
-------------	--

DATASHEET



Accuracy 1 gr



Tire width
min 1" - max 20"



Rim diameter
min 10" - max 26,5"
Maximum tire diameter
1150 mm



Rotation speed
208 rpm



Max wheel weight
70 kg



Weight 131 kg



Dimensions (H x D x L)
1830 x 1270 x 1260 mm



Cardboard box packaging (H x D x L)
1130 x 950 x 1140 mm

STANDARD ACCESSORIES



- Electronic rim width measurement arm



- Threaded screw with block 40 mm
 - Quick nut
 - 3 cones from 42 to 111,5 mm



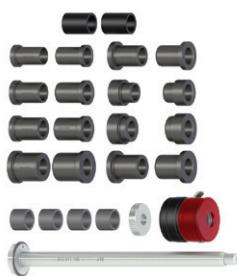
- Weight pliers
- Calibration weight
- Weights removal blade
- Weight sample

EXTRA OPTIONS FOR WHEEL BALANCER ROLL R6 MONITOR



ART. 8207

- Motorbike flange kit



ART. 8208

- Motorbike threaded screw kit 19 mm with bushes



ART. 8204

- Precision bush kit from 52,5 to 122 mm of 9



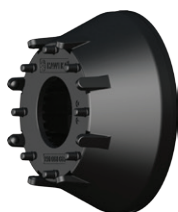
ART. 8205

- 3-4-5 hole flange



ART. 8209

- Quick nut



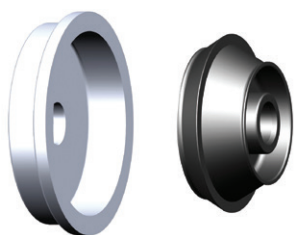
ART. 8210

- Lockring cap



ART. 8211

- Rubber gasket for alloy wheels



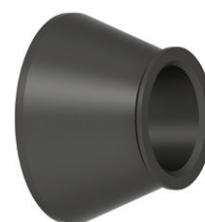
ART. 8201

- Van wheel kit, hole dim. 122-174 mm



ART. 8202

- Slide lift



ART. 8203

- SUV cone 95 - 132 mm