



# ROLLline R8 SONAR

- Internal electronic measuring arm for rim distance & diameter.
- LASER pointers
- Standard external SONAR measure wheel width.
- Threaded screw 40 mm
- LED Light ring
- Electromagnetic brake
- TFT Monitor 19" showing wheel data.
- Measurement cycle in 6 seconds
- Pneumatic locking system (ART. 8020)
- Automatic selecting program of balancing

INSTALLATION VIDEO

INSTRUCTIONS AVAILABLE NOW!



Picture shows  
CODE 8020

Made in Italy

## PRODUCT NUMBER / DESCRIPTION

**8015** ROLL R8 SONAR  
Power supply: single-phase  
220v - 50/60Hz

**8020** ROLL R8 SONAR P-LOCK  
Power supply: single-phase  
220v - 50/60Hz

## DATASHEET



Accuracy 1 gr



Tire width  
min 1" - max 24"



Rim diameter  
min 10" - max 28"  
Maximum tire diameter  
1150 mm



Rotation speed  
218 - 262 rpm



Max wheel weight  
80 kg



Weight  
ART. 8015: 175 kg  
ART. 8020: 182 kg



Dimensions (H x D x L)  
1830 x 1270 x 1260 mm



Cardboard box packaging (H x D x L)  
1130 x 950 x 1140 mm

## STANDARD ACCESSORIES



- Threaded screw with block 40 mm
  - Quick nut
- 3 cones from 42 to 111,5 mm (ART. 8015)



- Screw with block 40 mm
  - Quick nut
- 4 cones from 43 to 110 mm (ART. 8020)



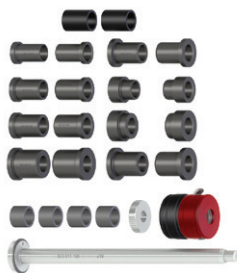
- Weight pliers
- Calibration weight
- Weights removal blade
- Weight sample

## EXTRA OPTIONS FOR WHEEL BALANCER ROLL R8 SONAR



**ART. 8207**

- Motorbike flange kit



**ART. 8208**

- Motorbike threaded screw kit 19 mm with bushes



**ART. 8204**

- Precision bushing kit from 52,5 to 122 mm of 9



**ART. 8205**

- 3-4-5 hole flange



**ART. 8209**

- Quick Nut



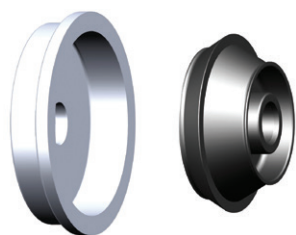
**ART. 8210**

- Lockring cup



**ART. 8211**

- Rubber gasket for alloy wheels



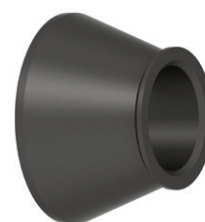
**ART. 8201**

- Van wheel kit, hole 122-174 mm



**ART. 8202**

- Slide lift



**ART. 8203**

- SUV cone 95-132 mm