

GRIP22



- Turntable tightening up to 24"
- Long-lasting jaws made of hardened steel
- Reinforced chassis and tower
- Single rotation speed
- Bead breaker double effect. Cylinder Ø 200 mm
- Pneumatic lifting of the tool
- Equipped with pressure gauge for tire inflation

DATASHEET

- Working pressure: 8 - 10 bar
- Turntable tightening: outward 10"-22" - inward 12"-24"
- Tire width: min. 3" - max 15"
- Maximum tire diameter: 1000 mm
- Rotation speed: 7 rpm
- Weight: 225 kg
- Dimensions (H x D x L): 1890 x 1590 x 2020 mm
- Nylon package on pallet (H x D x L): 1840 x 1150 x 1430 mm

STANDARD EQUIPMENT



- Kit of 4 plastic protection jaws



- Mounting lever 500 mm



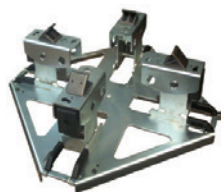
- N. 1 mounting tool cover



- N. 1 demounting head tongue protection

CODE	DESCRIPTION
6001	GRIP 22 Power supply: 3-phase 400V - 50/60 Hz
6001/M	GRIP 22 Power supply: single-phase 230V - 50 Hz

EXTRA OPTIONS FOR TIRE CHANGERS GRIP 22



ART. 6205

- Universal adaptor kit for motorbike wheels



ART. 6219

- Kit of 4 clamping adaptors for motorbike wheels from 6" to 24"



ART. 6220

- Kit of 4 clamping adaptors for motorbike wheels, oversize height from 6" to 24"



ART. 6221

- Kit of 4 rubber costed jaw protectors



ART. 6222

- Quick release kit for mounting tools with plastic tools



ART. 6223

- Plastic protection suitable for bead breaker



ART. 6224

- Mounting tool cover



ART. 6225

- Demounting head tongue protection



ART. 6244

- Bead pressing device



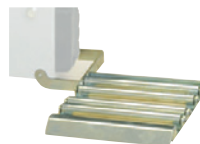
ART. 6245

- Higher bead pressing device



ART. 6246

- Mounting tool cover (for ART. 6222)



ART. 6249

- Roller board

ART. 6253

- Small helper arm (optional for IRON ARM)



ART. 6254

- Inflating tubeless kit



ART. 6255

- Iron Arm