

# GRIP22

Leverless  
Iron Arm



- Turntable tightens up to 24"
- Long-lasting jaws made of hardened steel
- Reinforced chassis and tower
- Single rotation speed
- Bead breaker double effect. Cylinder Ø 200 mm
- Pneumatic lifting of the tool
- Equipped with pressure gauge for tire inflation
- Side IRON ARM for standard RUN FLAT tires
- Standard equipped with LEVERLESS system

## DATASHEET

- Working pressure: 8 - 10 bar
- Turntable tightening: outward 10"-22" - inward 12"-24"
- Tire width: min. 3" - max 15"
- Maximum tire diameter: 1000 mm
- Rotation speed: 7 rpm
- Weight: 334 kg
- Dimensions (H x D x L): 1890 x 1590 x 2020 mm
- Nylon packaging on pallet: 1840 x 1150 x 1430 mm

## STANDARD EQUIPMENT



- Kit of 4 plastic protection jaws



- Mounting lever 500 mm



- N. 1 mounting tool cover



- N. 1 demounting head tongue protection

CODE	DESCRIPTION
6003/L	GRIP 22 Power supply: 3-phase 400V - 50/60Hz

## EXTRA OPTIONS FOR TIRE CHANGERS GRIP 22



**ART. 6221**

- Kit of 4 rubber costed jaw protectors



**ART. 6223**

- Plastic protection suitable for bead breaker



**ART. 6240**

- Kit of 10 demounting head tongue protection



**ART. 6241**

- Kit of 10 mounting tool cover



**ART. 6244**

- Bead pressing device



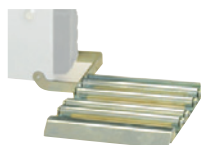
**ART. 6245**

- Higher bead pressing device



**ART. 6247**

- Adjusting device for leverless tool



**ART. 6249**

- Roller board

**ART. 6253**

- Small helper arm (optional for IRON ARM)



**ART. 6254**

- Inflating tubeless kit