

GRIP24



- Turntable tightens up to 26".
- Long-lasting jaws made of hardened steel.
- "Easy Access" extractable pedal box for quick service
- Reinforced chassis and tower
- Double rotation speed by pedal
- Pneumatic lifting of the tool
- Bead breaker double effect. Cylinder Ø 200 mm
- Pneumatic tilting tower
- Adjustable bead breaker shovel angle
- POWER OUT patented system for granting no BB shovel stuck into the rim
- Tire inflation by pedal

DATASHEET

- Working pressure: 8 - 10 bar
- Turntable tightening: outward 10"-24" - inward 12"-26"
- Tire width: min. 3" - max 16"
- Maximum tire diameter: 1100 mm
- Rotation speed: 7 - 14 rpm
- Weight: 270 kg
- Dimensions (H x D x L): 1890 x 1590 x 2040 mm
- Cardboard box packaging: 1880 x 1150 x 1430 mm

STANDARD EQUIPMENT



- Kit of 4 plastic protection jaws



- Mounting lever 500 mm



- N. 3 mounting tool cover



- N. 3 demounting head tongue protection



- Plastic protection suitable for bead breaker

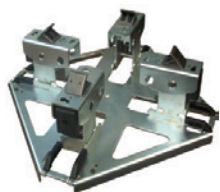
CODE

6011

DESCRIPTION

GRIP 24
Power supply:
3-phase 400V - 50Hz

EXTRA OPTIONS FOR TIRE CHANGERS GRIP 24



ART. 6205

- Universal adaptor kit for motorbike wheels



ART. 6219

- Kit of 4 clamping adaptors for motorbike wheels from 6" to 24"



ART. 6220

- Kit of 4 clamping adaptors for motorbike wheels, oversized height from 6" to 24"



ART. 6221

- Kit of 4 rubber costed jaw protectors



ART. 6222

- Quick release kit for mounting tools with plastic tools



ART. 6223

- Plastic protection suitable for bead breaker



ART. 6224

- Mounting tool cover



ART. 6225

- Demounting head tongue protection



ART. 6244

- Bead pressing device



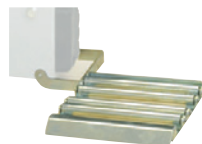
ART. 6245

- Higher bead pressing device



ART. 6246

- Mounting tool cover (for ART. 6222)



ART. 6249

- Roller board

ART. 6253

- Small helper arm (optional IRON ARM)



ART. 6254

- Inflating tubeless kit



ART. 6255

- Iron Arm