

# GRIP24

**Inverter  
Iron Arm**



- Turntable tightens up to 26"
- Long-lasting jaws made of hardened steel
- "Easy Access" extractable pedal box for quick service
- Reinforced chassis and tower
- Double rotation speed by pedal with INVERTER
- Pneumatic lifting of the tool
- Bead breaker double effect. Cylinder Ø 200 mm
- Pneumatic tilting tower
- Adjustable bead breaker shovel angle
- POWER OUT patented system for granting no BB shovel stuck into the rim
- Tire inflation by pedal
- Side arm for standard RUN FLAT tires

## DATASHEET

- Working pressure: 8 - 10 bar
- Turntable tightening: outward 10" - 24" inward 12" - 26"
- Tire width: min. 3" - max 16"
- Maximum tire diameter: 1100 mm
- Rotation speed: 7 - 16 rpm
- Weight: 360 kg
- Dimensions (H x D x L): 1890 x 1590 x 2040 mm
- Cardboard box packaging: 1880 x 1150 x 1430 mm

## STANDARD EQUIPMENT



- Kit of 4 plastic protection jaws



- Mounting lever 500 mm



- N. 3 mounting tool cover



- N. 3 demounting head tongue protection



- Plastic protection suitable for bead breaker

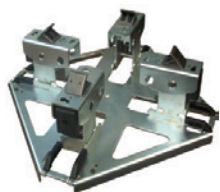
## CODE

6012/M

## DESCRIPTION

GRIP 24  
Power supply:  
single-phase 230V - 50/60Hz

## EXTRA OPTIONS FOR TIRE CHANGERS GRIP 24



**ART. 6205**

- Universal adaptor kit for motorbike wheels



**ART. 6219**

- Kit of 4 clamping adaptors for motorbike wheels from 6" to 24"



**ART. 6220**

- Kit of 4 clamping adaptors for motorbike wheels, oversize height from 6" to 24"



**ART. 6221**

- Kit of 4 rubber costed jaw protectors



**ART. 6222**

- Quick release kit for mounting tools with plastic tools



**ART. 6223**

- Plastic protection suitable for bead breaker



**ART. 6224**

- Mounting tool cover



**ART. 6225**

- Demounting head tongue protection



**ART. 6244**

- Bead pressing device



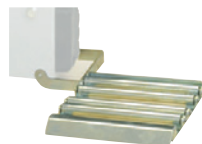
**ART. 6245**

- Higher bead pressing device



**ART. 6246**

- Mounting tool cover (for ART. 6222)



**ART. 6249**

- Roller board



**ART. 6254**

- Inflating tubeless kit