

# ROLL55

**Digital display**  
**Automatic approximation of the width**  
**Automatic programs**  
**Electric brake**  
**Wheel guard**



- Internal electronic measuring arm for rim distance, diameter and wheel adhesive weights' positioning
- Automatic measuring for rim's width
- Automatic selection of balancing program
- Threaded screw 40 mm
- Equipped with electric brake
- Automatic braking when reaching the position
- Ergonomically designed, allows the best access within the rim
- Fast measurement cycle in 5 seconds
- Hidden behind spokes, wheel weights' program
- Double digital display panel highly visible with intuitive control
- Wheel guard
- Self-calibration and self-diagnosis

## DATASHEET

	Accuracy: 1 gr
	Tire width: min 1,5" - max 20"
	Rim diameter: min 10" - max 30"
	Max wheel diameter: 1050 mm
	Rotation speed: 98 rpm
	Max wheel weight: 75 kg
	Weight: 115 kg
	Dimensions (H x D x L): 1050 x 850 x 1150 mm
	Cardboard box packaging: 1330 x 1330 x 1330 mm

CODE	DESCRIPTION
8002	ROLL 55 Power supply: single-phase 230V - 50/60Hz

## STANDARD EQUIPMENT



- Threaded screw with block 40 mm
- Quick nut
- N. 3 cones from 42 to 111,5 mm



- Weight pliers
- Calibration weight
- Weight sample

**EXTRA OPTION FOR WHEEL BALANCER ROLL 55**



**ART. 8207**

- Motorbike flange kit



**ART. 8208**

- Motorbike threaded screw kit 19 mm with bushes



**ART. 8204**

- Precision bush kit from 52,5 to 122 mm of 9



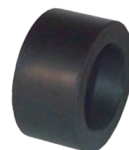
**ART. 8213**

- 3-4-5 hole flange



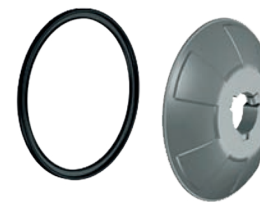
**ART. 8214**

- Spacer for sport wheels



**ART. 8215**

- Bush for kit 8214



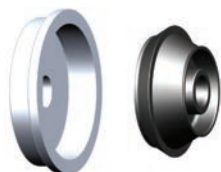
**ART. 8216**

- Plastic cup with widen diameter for allow wheels



**ART. 8217**

- Quick nut with lockring and rubber protection



**ART. 8201**

- Van wheel kit, hole dim. 122 - 174 mm



**ART. 8202**

- Slide lift



**ART. 8203**

- SUV cone 95 - 132 mm