

ROLL55

Digital display
Automatic approximation of the width
Automatic programs
Electric brake



- Internal electronic measuring arm for rim distance, diameter and wheel adhesive weights' positioning
- Automatic measuring for rim's width
- Automatic selection of balancing program
- Threaded screw 40 mm
- Equipped with electric brake
- Automatic braking when reaching the position
- Ergonomically designed, allows the best access within the rim
- Fast measurement cycle in 5 seconds
- Hidden behind spokes, wheel weights' program
- Double digital display panel highly visible with intuitive control
- Self-calibration and self-diagnosis

DATASHEET

	Accuracy: 1 gr
	Tire width: min 1,5" - max 20"
	Rim diameter: min 10" - max 30"
	Max wheel diameter: 1050 mm
	Rotation speed: 98 rpm
	Max wheel weight: 75 kg
	Weight: 105 kg
	Dimensions (H x D x L): 1050 x 850 x 1150 mm
	Cardboard box packaging: 1440 x 680 x 980 mm

CODE	DESCRIPTION
8001	ROLL 55 Power supply: single-phase 230V - 50/60Hz

STANDARD EQUIPMENT



- Threaded screw with block 40 mm
- Quick nut
- N. 3 cones from 42 to 111,5 mm



- Weight pliers
- Calibration weight
- Weight sample

EXTRA OPTION FOR WHEEL BALANCER ROLL 55



ART. 8207

- Motorbike flange kit



ART. 8208

- Motorbike threaded screw kit 19 mm with bushes



ART. 8204

- Precision bush kit from 52,5 to 122 mm of 9



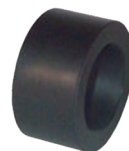
ART. 8213

- 3-4-5 hole flange



ART. 8214

- Spacer for sport wheels



ART. 8215

- Bush for kit 8214



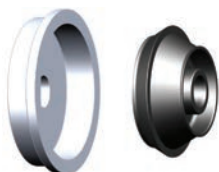
ART. 8216

- Plastic cup with widen diameter for allow wheels



ART. 8217

- Quick nut with locking and rubber protection



ART. 8201

- Van wheel kit, hole dim. 122 - 174 mm



ART. 8202

- Slide lift



ART. 8203

- SUV cone 95 - 132 mm