

ROLL 65

Monitor
Sonar
Automatic programs



- Internal electronic measuring arm for rim distance, diameter and wheel adhesive weights' positioning
- Automatic selecting program of balancing
- External SONAR measure wheel width
- Threaded screw 40 mm
- Pedal brake
- Ergonomically designed, allows the best access within the rim
- Fast measurement cycle in 4 second to save working time
- Split weight mode to place weights, hidden and unseen behind spokes
- Self-calibration and self-diagnosis

DATASHEET

	Accuracy: 1 gr
	Tire width: min 1,5" - max 20"
	Rim diameter: min 10" - max 30"
	Max wheel diameter: 1200 mm
	Rotation speed: 100 rpm
	Max wheel weight: 75 kg
	Weight: 140 kg
	Dimensions (H x D x L): 1400 x 1200 x 1300 mm
	Cardboard box packaging: 1950 x 1030 x 1540 mm

CODE	DESCRIPTION
8007	ROLL 65 Power supply: single-phase 230V - 50/60Hz

STANDARD EQUIPMENT



- Threaded screw with block 40 mm
- Quick nut
- N. 3 cones from 42 to 110 mm



- Weight pliers
- Calibration weight

EXTRA OPTION FOR WHEEL BALANCER ROLL 65



ART. 8207

- Motorbike flange kit



ART. 8208

- Motorbike threaded screw kit 19 mm with bushes



ART. 8204

- Precision bush kit from 52,5 to 122 mm of 9



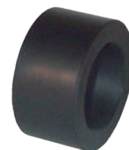
ART. 8213

- 3-4-5 hole flange



ART. 8214

- Spacer for sport wheels



ART. 8215

- Bush for kit 8214



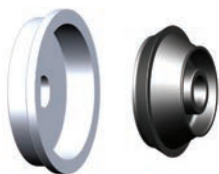
ART. 8216

- Plastic cup with widen diameter for allow wheels



ART. 8217

- Quick nut with lockring and rubber protection



ART. 8201

- Van wheel kit, hole dim. 122 - 174 mm



ART. 8202

- Slide lift



ART. 8203

- SUV cone 95 - 132 mm