

# ROLL75

**Laser point  
Automatic positioning  
Sonar**



- Internal measuring arm for rim distance and diameter
- Automatic selecting program of balancing
- External SONAR measure wheel width.
- Threaded screw 40 mm
- Electric brake
- Ergonomically designed, allows the best access within the rim
- Fast measurement cycle in 4 second to save working time
- Split weight mode to place weights, hidden and unseen behind spokes
- Self-calibration and self-diagnosis
- Automatic positioning
- LED light beam to illuminate the inside of the rim
- LASER point for exact positioning of wheel weights

## DATASHEET

	Accuracy: 1 gr
	Tire width: min 1,5" - max 20"
	Rim diameter: min 10" - max 30"
	Max wheel diameter: 1200 mm
	Rotation speed: 160 rpm
	Max wheel weight: 80 kg
	Weight: 168 kg
	Dimensions (H x D x L): 1460 x 1600 x 1740 mm
	Cardboard box packaging: 1550 x 1650 x 1790 mm

CODE	DESCRIPTION
8016	ROLL 75 Power supply: single-phase 230V -50/60Hz

## STANDARD EQUIPMENT



- Threaded screw with block 40 mm
- Quick nut
- N. 3 cones from 42 to 111,5 mm



- Weight pliers
- Calibration weight
- Weight sample

## EXTRA OPTION FOR WHEEL BALANCER ROLL 75



**ART. 8207**

- Motorbike flange kit



**ART. 8208**

- Motorbike threaded screw kit 19 mm with bushes



**ART. 8204**

- Precision bush kit from 52,5 to 122 mm of 9



**ART. 8205**

- 3-4-5 hole flange



**ART. 8209**

- Quick nut



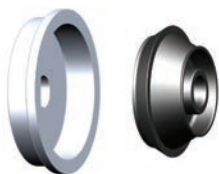
**ART. 8210**

- Lockring cap



**ART. 8211**

- Rubber gasket for alloy wheels



**ART. 8201**

- Van wheel kit, hole dim. 122 - 174 mm



**ART. 8202**

- Slide lift



**ART. 8203**

- SUV cone 95 - 132 mm