

ROLL76

P-LOCK
Laser point
Automatic positioning
Sonar



- Internal measuring arm for rim distance and diameter
- Automatic selecting program of balancing
- External SONAR measure wheel width.
- Threaded screw 40 mm
- Electric brake
- Ergonomically designed, allows the best access within the rim
- Fast measurement cycle in 4 second to save working time
- Split weight mode to place weights, hidden and unseen behind spokes
- Self-calibration and self-diagnosis
- Automatic positioning
- LED light beam to illuminate the inside of the rim
- LASER point for exact positioning of wheel weights
- Pneumatic wheel locking P-LOCK

DATASHEET

	Accuracy: 1 gr
	Tire width: min 1,5" - max 20"
	Rim diameter: min 10" - max 30"
	Max wheel diameter: 1200 mm
	Rotation speed: 160 rpm
	Max wheel weight: 80 kg
	Weight: 178 kg
	Dimensions (H x D x L): 1460 x 1600 x 1740 mm
	Cardboard box packaging: 1550 x 1650 x 1790 mm

CODE	DESCRIPTION
8021	ROLL 76 Power supply: single-phase 230V - 50/60Hz

STANDARD EQUIPMENT



- Threaded screw with block 40 mm
- Quick nut
- N. 4 cones from 42 to 110 mm



- Weight pliers
- Calibration weight
- Weight sample

EXTRA OPTION FOR WHEEL BALANCER ROLL 75



ART. 8207

- Motorbike flange kit



ART. 8208

- Motorbike threaded screw kit 19 mm with bushes



ART. 8204

- Precision bush kit from 52,5 to 122 mm of 9



ART. 8205

- 3-4-5 hole flange



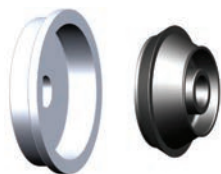
ART. 8210

- Lockring cap



ART. 8211

- Rubber gasket for alloy wheels



ART. 8201

- Van wheel kit, hole dim. 122 - 174 mm



ART. 8202

- Slide lift



ART. 8203

- SUV cone 95 - 132 mm