

# ROLL85

Truck and cars  
Automatic caliber  
Wheel side lift



- Internal electronic measuring arm for rim distance, diameter and wheel adhesive weights' positioning.
- Automatic selection of balancing program car/truck
- Threaded screw 40 mm
- Pneumatic side lift for truck wheels
- Electric brake
- Ergonomically designed, allows the best access within the rim
- Hidden behind spokes, wheel weights' program
- Self-calibration and self-diagnosis

## DATASHEET

	Accuracy: 1 gr
	Tire width: min 2" - max 20"
	Rim diameter: min. 8" - max 30"
	Max wheel diameter: 1150 mm
	Rotation speed: 160 rpm
	Max wheel weight: 200 kg
	Weight: 280 kg
	Dimensions (H x D x L): 1460 x 1750 x 2230 mm

## STANDARD EQUIPMENT



- Threaded screw with block 40 mm
- Quick nut
- N. 3 cones from 42 to 111,5 mm



- Weight pliers
- Calibration weight
- Weight sample

## RECOMMENDED ACCESSORIES



### ART. 8223

- Truck wheel centering kit

## CODE

8051

## DESCRIPTION

ROLL 85  
Power supply:  
single-phase 230V - 50/60Hz

## EXTRA OPTION FOR WHEEL BALANCER ROLL 85



**ART. 8204**

- Precision bush kit from 52,5 to 122 mm of 9



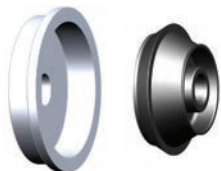
**ART. 8205**

- 3-4-5 hole flange



**ART. 8210**

- Lockring cap



**ART. 8201**

- Van wheel kit, hole dim. 122 - 174 mm



**ART. 8203**

- SUV cone 95 - 132 mm

**ART. 8224**

- External measuring width arm



**ART. 7050**

- Inflation cage for truck tires

### INFLATION CAGE FEATURES

Weight: 166 kg

External dimensions ( H x D x L ): 1580 x 1600 x 800 mm

Internal dimensions ( H x D x L ): 1500 x 1500 x 700 mm

Maximum tire diameter: 1500 mm

Maximum tire width: 700 mm