







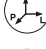

# GRIP23

**Double Speed**  
**Tire inflation by pedal**  
**Iron arm**  
**WDK approved**



- Turntable tightens up to 24"
- Long-lasting jaws made of hardened steel
- Reinforced chassis and tower
- Double rotation speed by pedal
- Bead breaker double effect. Cylinder Ø 200 mm
- Pneumatic tilting tower
- Tire inflation by pedal
- Side arm for standard RUN FLAT tires

## DATASHEET

	Working pressure: 8 - 10 bar
	Turntable tightening: out. 10"-22" - in. 12"-24"
	Tire width: min. 3" - max 15"
	Maximum tire diameter: 1050 mm
	Rotation speed: 7 - 14 rpm
	Bead breaker power: 30800 N
	Weight: 325 kg
	Dimensions (H x D x L): 1890 x 1590 x 2020 mm
	Nylon packaging on pallet: 1840 x 1150 x 1430 mm

## STANDARD EQUIPMENT



- Kit of 4 plastic protection jaws



- Mounting lever 500 mm



- N. 1 mounting tool cover



- N. 1 demounting head tongue protection

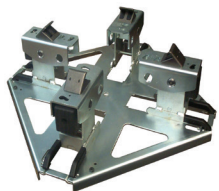
## CODE

**6007**

## DESCRIPTION

**GRIP 23**  
 Power supply:  
 3-phase 400v - 50Hz

## EXTRA OPTIONS FOR TIRE CHANGERS GRIP 23



**ART. 6205**

- Universal adaptor kit for motorbike wheels



**ART. 6219**

- Kit of 4 clamping adaptors for motorbike wheels from 6" to 24"



**ART. 6220**

- Kit of 4 clamping adaptors for motorbike wheels, oversize height from 6" to 24"



**ART. 6221**

- Kit of 4 rubber costed jaw protectors



**ART. 6222**

- Quick release kit for mounting tools with plastic tools



**ART. 6223**

- Plastic protection suitable for bead breaker



**ART. 6242**

- Mounting tool cover new model



**ART. 6243**

- Demounting head tongue protection new model



**ART. 6244**

- Bead pressing device



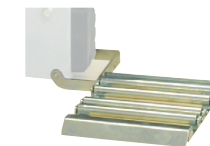
**ART. 6245**

- Higher bead pressing device



**ART. 6246**

- Mounting tool cover spare part



**ART. 6249**

- Roller board



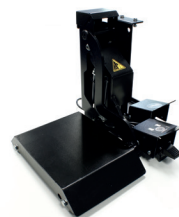
**ART. 6253**

- Small helper arm (optional for IRON ARM)



**ART. 6254**

- Inflating tubeless kit



**ART. 6257**

- Side lift for Grip 23 - 24 - 26



**ART. 6258**

- Mounting tool cover with adaptor



**ART. 6262**

- WDK Kit